



I Luv Coffee Express

1300 324 111

Cleaning and Troubleshooting Guide

**To ensure the best quality and
performance of your Express machine**

**PLEASE CLEAN WEEKLY using the
following guides.**

AUS PH: 1300 324 111
NZ PH: 0800 458 826





Trouble Shooting

PROBLEM RESOLUTION

ERROR BOILER Is the machine plumbed or fed from a water tank?

PLUMBED: check to see if there are any kinks in the water line or the mains are still on (turn on a tap in the building to check)

DIRECT FED: Check the following: The tank has water in it / Any kinks in water the line / The end of the water line is under water / Any blockages in the mixing bowl / Press the reset button (back right corner under lid of Evo/Revo)

RESOLUTION: RESOLVE WATER ISSUE / PRIME BOILER BY TURNING MACHINE ON AND OFF TO GO THROUGH WASHING CYCLE / CLEAN / REFILL ALL CONSUMABLES / LET BOILER COOL BEFORE ATTEMPTING TO RESTART (ABOUT 20MINS)

ERROR SOLUBLE FLOW (direct feed)

DIRECT FED: Check the following: The tank has water in it / Any kinks in water the line / The end of the water line is under water / Any blockages in the mixing bowl / Press the reset button (back right corner under lid of Evo/Revo)

ERROR SOLUBLE FLOW (CONT)

Make sure there are no blockages in the mixing bowl
Lack of water or a small piece of bean can block the pipe from the mixing assembly

RESOLUTION: Clean with a slither of wooden stirrer (twisted to split length wise) do not use a metal or sharp object as it can scratch the surface creating a potential bacteria haven.

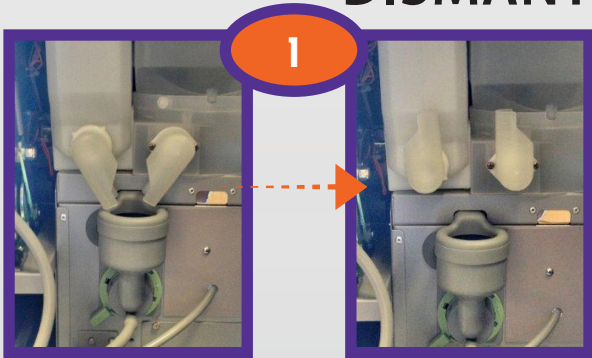
ERROR GRINDER Check if there are beans in hopper, check hopper chute slide is open, circuit breaker maybe tripped, beans could be caught under the doser arm.

RESOLUTION: Fill hopper, open chute, push circuit breaker, dislodge beans.

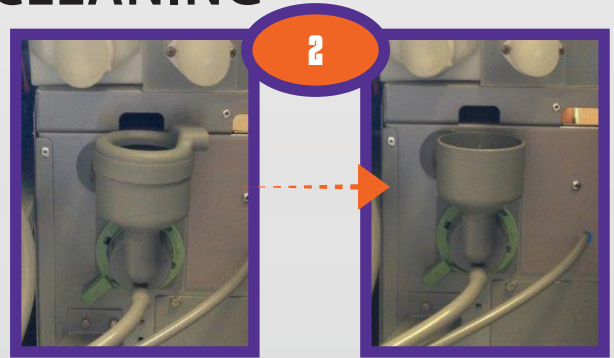
AUS PH: 1300 324 111
NZ PH: 0800 458 826

MACHINE CLEANING GUIDE

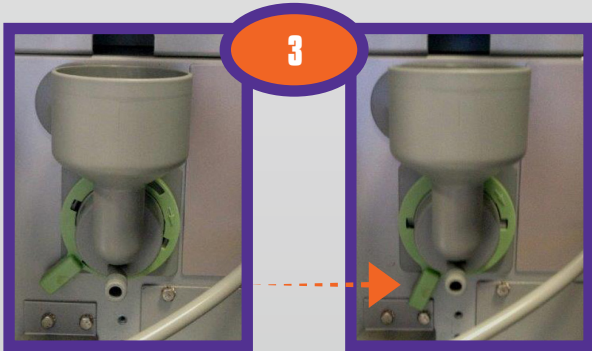
DISMANTLE/CLEANING



1
Reposition dispensing spouts & remove outlet hose.



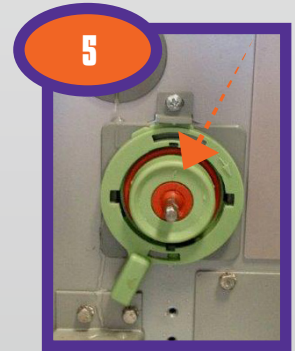
2
Turn & remove top cover



3
Rotate green locking lever anti-clockwise until click (7 o'clock position).



4
Remove mixing bowl



5
Remove whipper blade



6
Rotate green locking lever anti-clockwise (6 o'clock position)



7
Remove mixing plate



8
Thoroughly wash all components and dry. Please inspect mixing seal and whipper blade for damage. Replace if required.



9
Clean motor assembly and machine body.

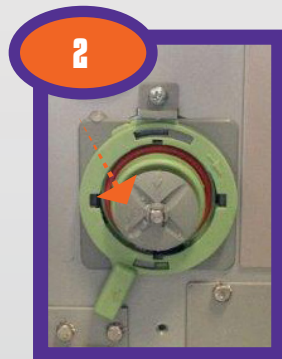


MACHINE CLEANING GUIDE

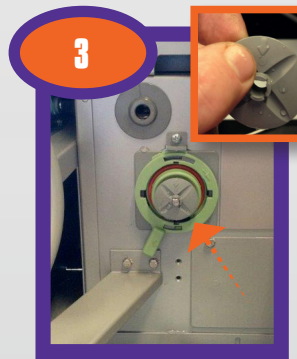
REASSEMBLY



1
Refit mixing plate (green locking lever to 6 o'clock position)



2
Reposition locking lever clockwise to the 7 o'clock position.



3
Refit whipper blade being sure to align 'arrow' on blade with flat on motor shaft. Push until it clicks



4
Refit mixing bowl aligning water spout and mixing bowl tabs.



5
Rotate locking lever clockwise to 8 o'clock position to lock mixing bowl



6
Refit top cover and position into the vent hole.



7
Reposition dispensing spouts.

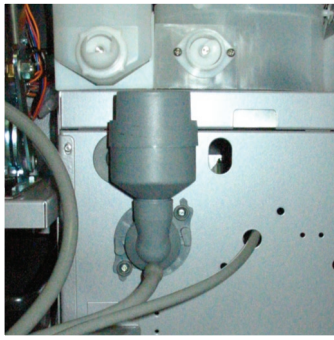


8
Refit outlet hose.



ALL SERIAL NUMBERS BELOW 30337

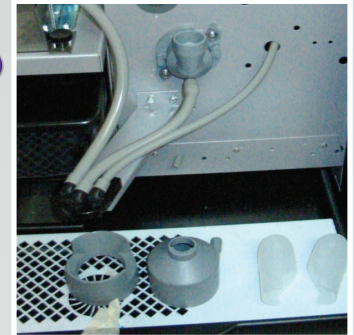
Regular Cleaning & Maintenance Guide



- 1** Take the elbows off the chocolate & milk containers, wash and dry thoroughly.

Hold onto the 2 top sections of the mixing area and pull them towards you, lifting them out of the mixer section.

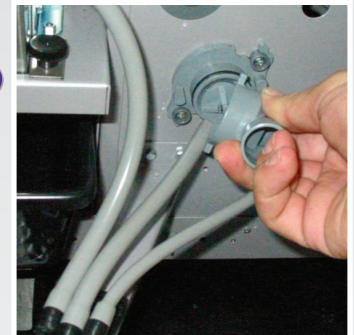
2



- 3** Hold onto the mixing bowl & twist it to the right, unhooking it from its mounting. Then take the grey hose off the mixing bowl.

Use the mixing bowl to remove the whipper wheel, by placing it behind the wheel and levering it off.

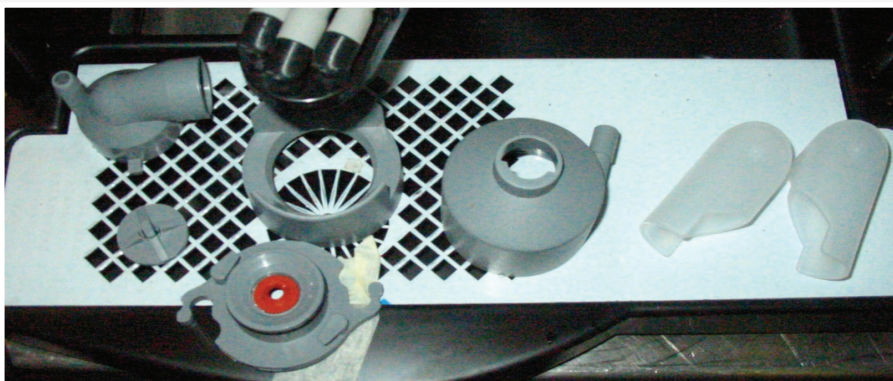
4



- 5** Unhook the base plate from it's mountings by turning clockwise 10mm and pulling towards you.

Clean the whipper shank and the surrounding area of any residual milk or chocolate powder, with a damp cloth.

6

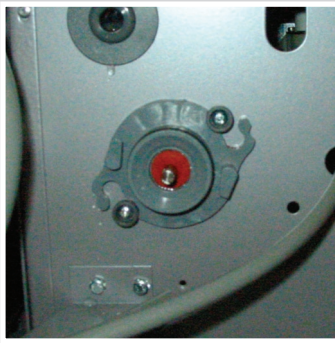


7 **CLEAN THESE PARTS WEEKLY DO NOT USE ANY ABRASIVES OR SHARP OBJECTS!**

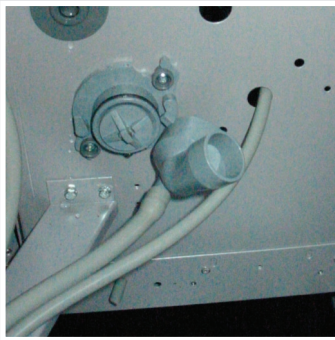
ALL SERIAL NUMBERS BELOW 30337



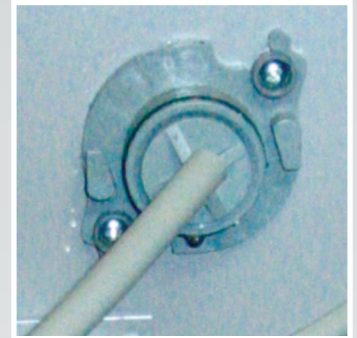
Re-assembling the unit



- 1 Place the base plate back onto its mountings, turning anti clockwise 10mm to engaging the lock tabs firmly.

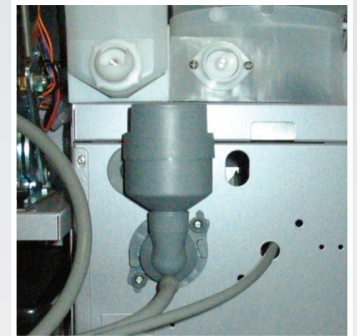


- 2 Find the flat spot on the whipper shank and turn it so it faces the top. Then on the whipper wheel you will find a small dot, align the dot with the flat on the shaft & push the wheel back on as far as possible.



- 3 Place the mixing bowl on next & turn it so that the bowl hooks back into its mountings.

- 4 Place the next 2 pieces of the mixing area back into place by gently inserting them into the correct areas. The lower half will fit into a round hole on the back wall, the top half will fit into the rectangle hole on the wall just above.



- 5 Place the elbows back into place, and the cleaning process is completed.



AUS PH: 1300 324 111

NZ PH: 0800 458 826

WWW.EBG.COM.AU

WWW.ILUVCOFFEE.CO.NZ